

Leerrohr DN 100  
für Kältemittelleitungen  
mit wasserdichten Wand-  
durchführungen  
1,0m u. Erdreich

**AUSSEN-  
KAMIN**

Bonus/Abgas ca. 15  
Ausführung durch  
Heizungsbauer

**HEIZUNG**

FFB:	+ 5 cm
BEL:	GLATTSTRICH
BF:	9,24 m <sup>2</sup>
RU:	12,19 m
RH:	2,47 m

**GARAGE**

FFB:	+ 5 cm
BEL:	GLATTSTRICH
BF:	22,89 m <sup>2</sup>
RU:	20,56 m
RH:	2,47 m

**KELLER**

FFB:	+ 5 cm
BEL:	GLATTSTRICH
BF:	21,75 m <sup>2</sup>
RU:	19,16 m
RH:	2,47 m

**WF**

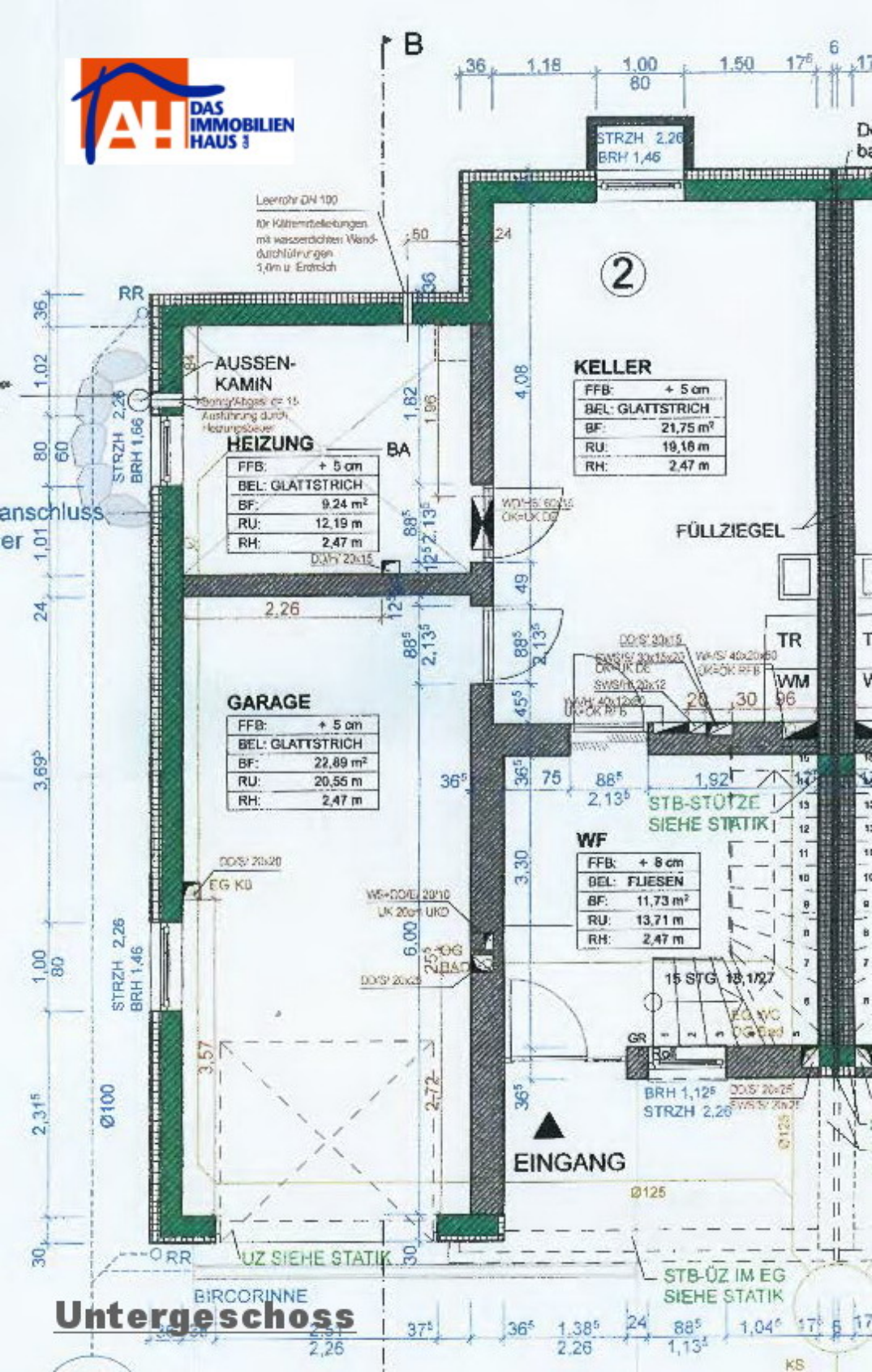
FFB:	+ 8 cm
BEL:	FLIESEN
BF:	11,73 m <sup>2</sup>
RU:	13,71 m
RH:	2,47 m

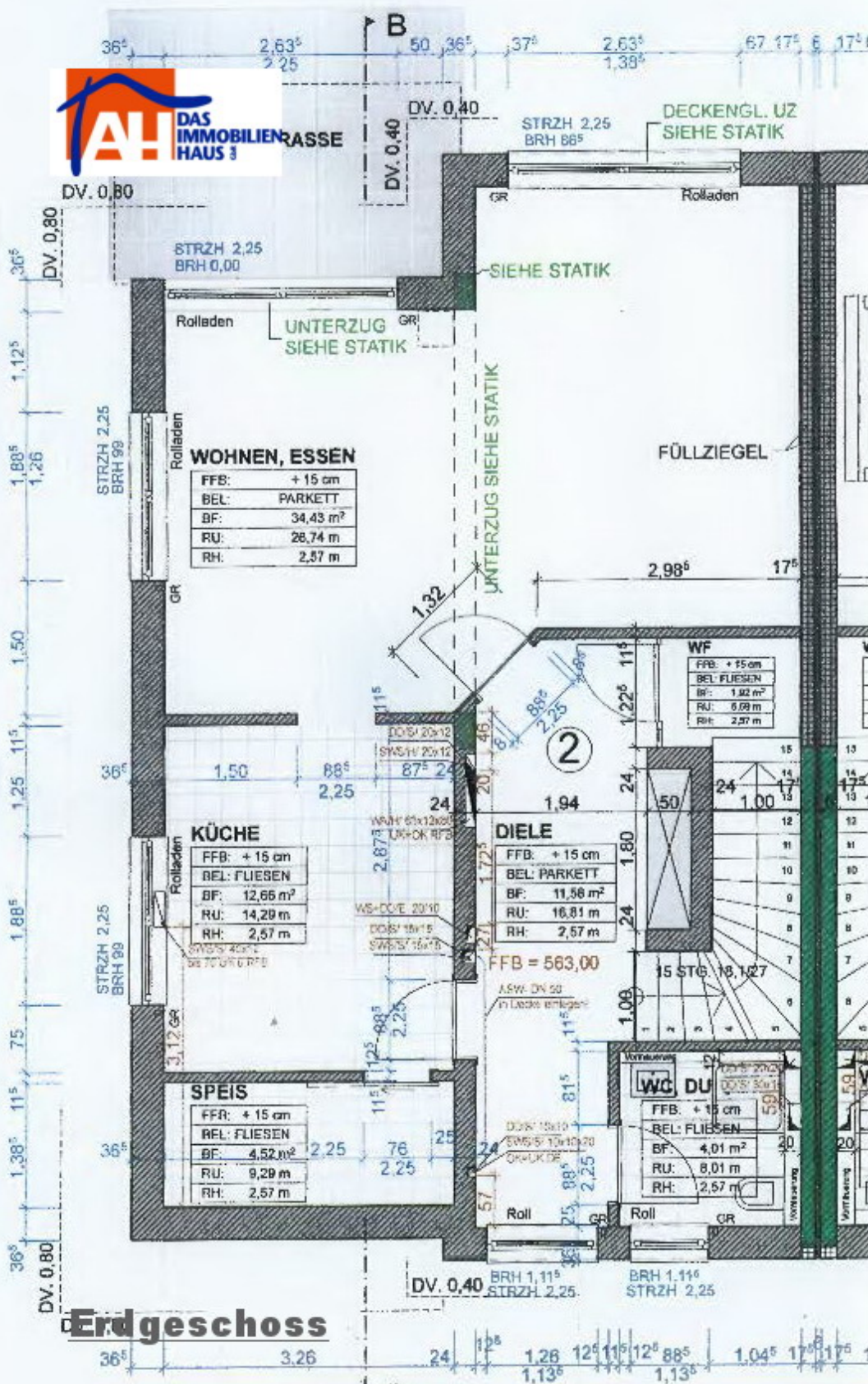
**EINGANG**

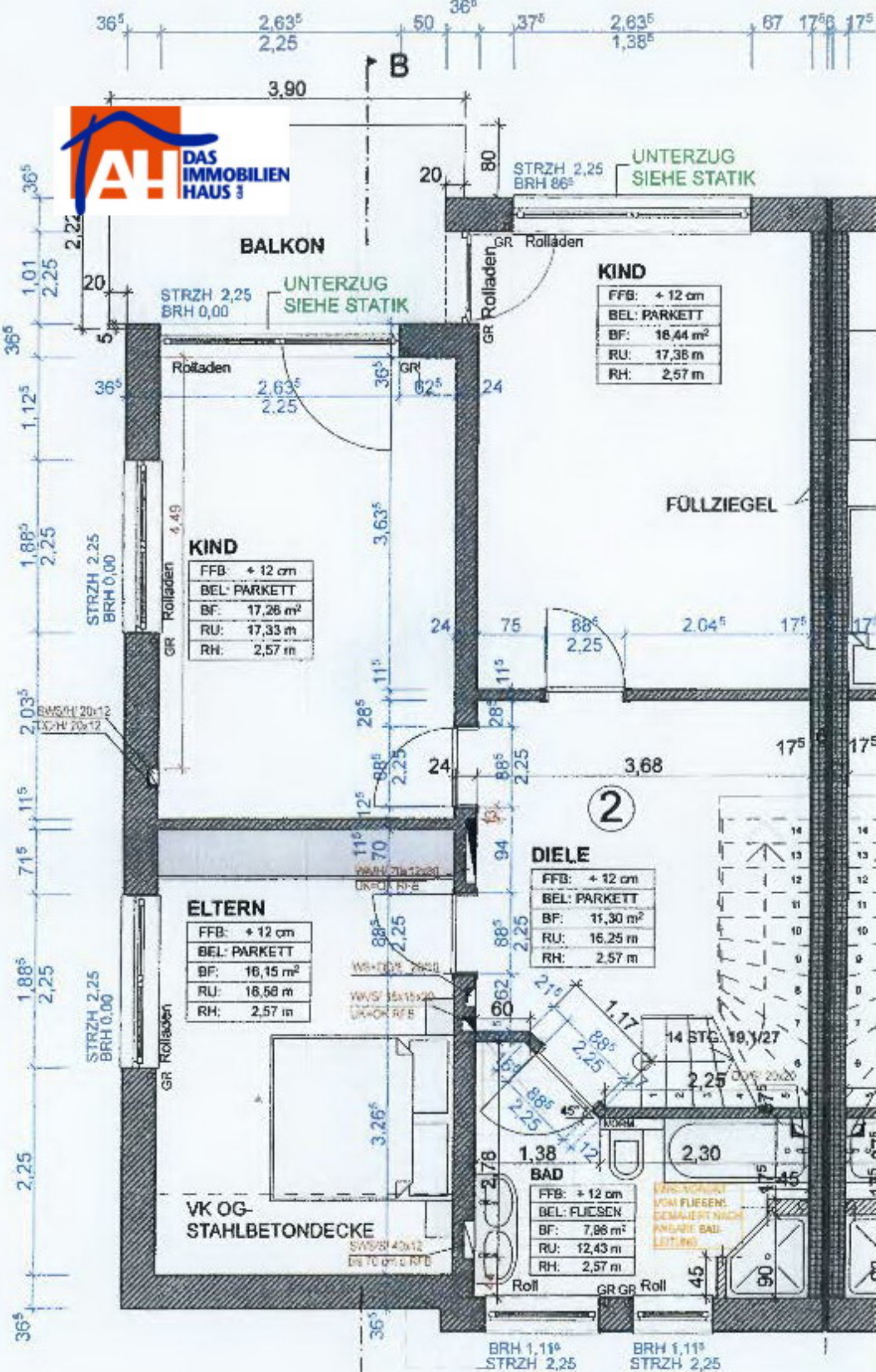
BIRCORINNE

**Untergeschoss**

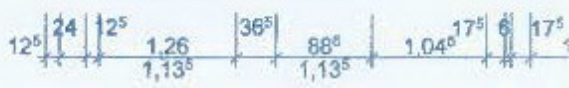
STB-ÜZ IM EG  
SIEHE STATIK

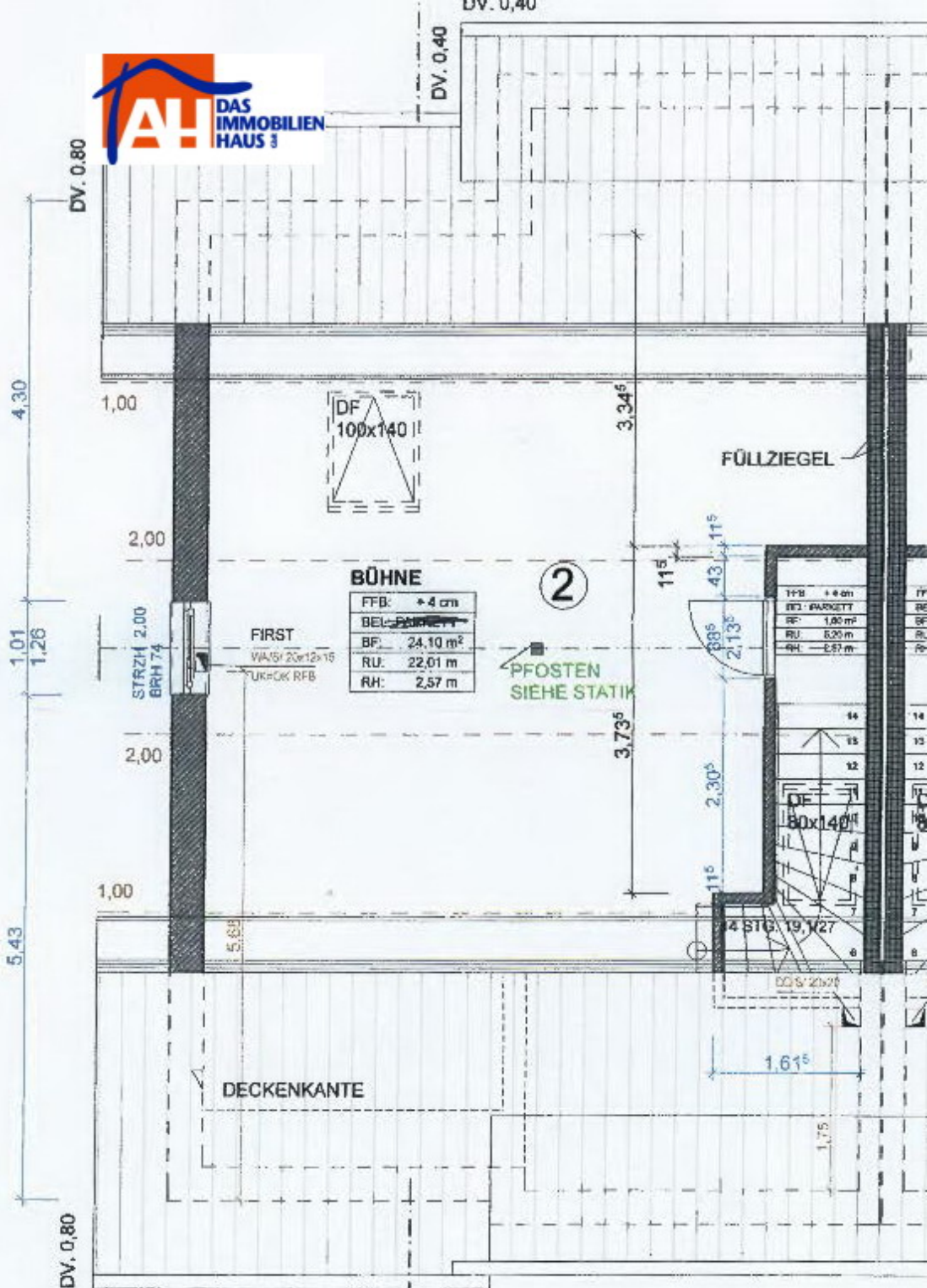


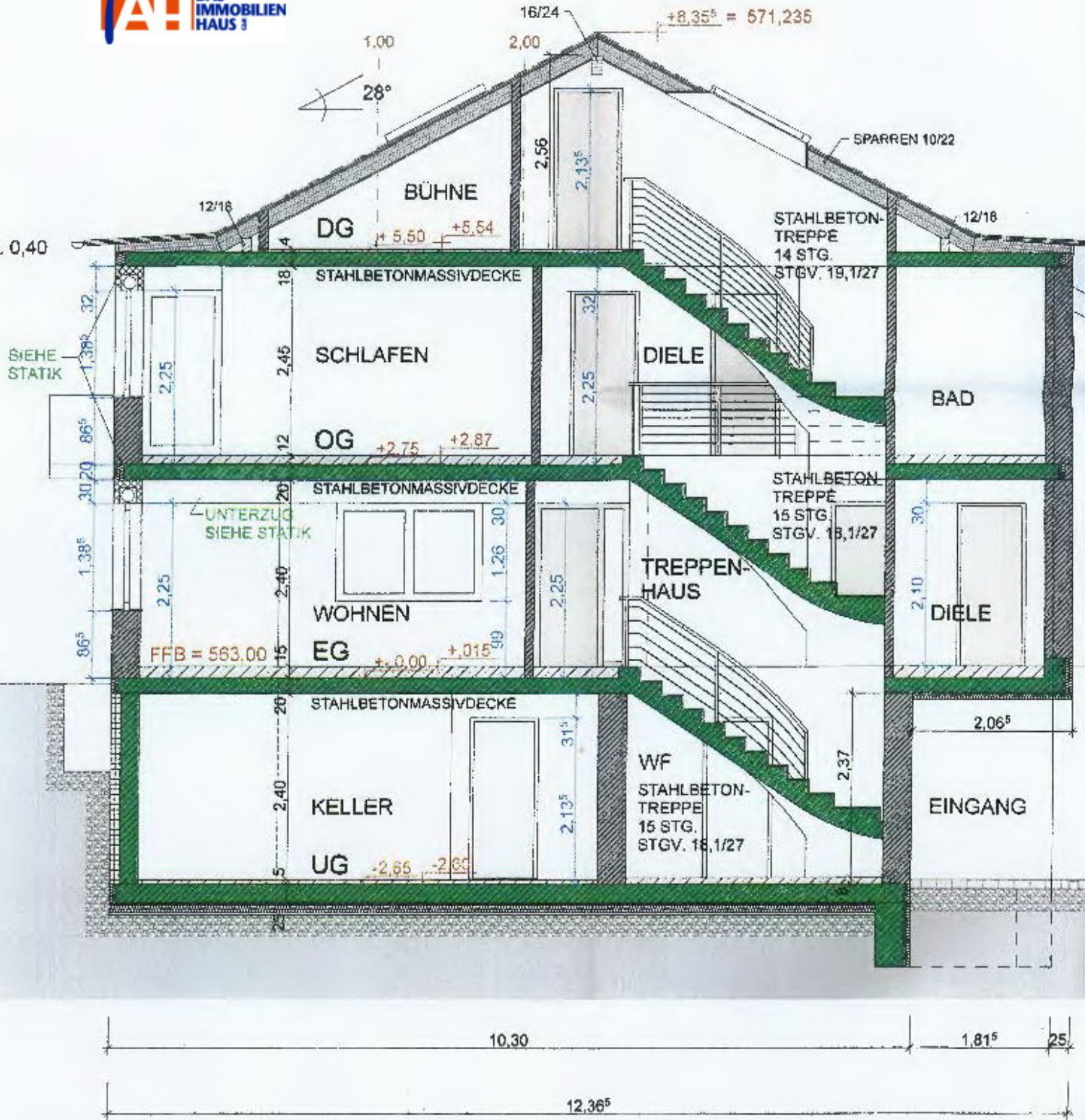




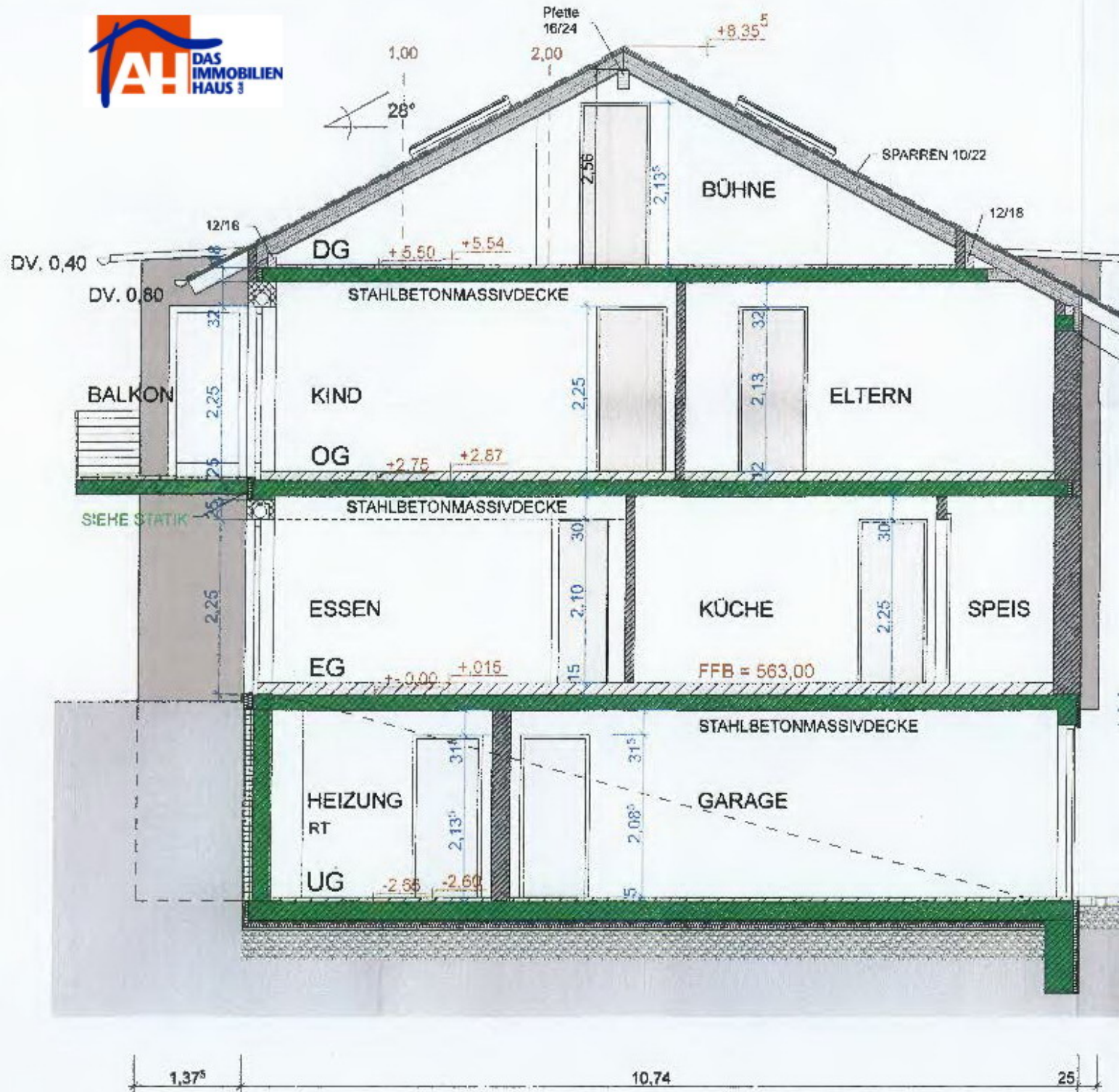
# Obergeschoss







**SCHNITT A - A**



**SCHNITT B - B**